

NORTH WEALD AIRFIELD, EPPING

OVERVIEW

CLIENT

Qualis Commercial Limited

SECTORS

Transport Infrastructure

LOCATION

North Weald, Essex

PLANNING AUTHORITY

Epping Forest District Council

HIGHWAY AUTHORITY

Essex County Council

PROJECT TEAM

Q+A Planning
RPS

PROJECT MANAGER

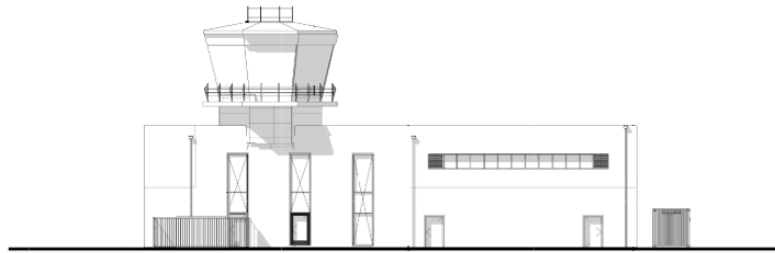
Stephen Kemp

PROJECT DIRECTOR

Daniel Ekstrand



South Elevation
1 : 200



North Elevation
1 : 200

PROJECT

We were instructed by Qualis Commercial Limited to support them in relation to the proposed relocation of the existing Control Tower and Rescue and Fire Fighting Services at North Weald Airfield in Epping, Essex. The proposals included a new parking shelter for operational vehicles, access to the perimeter road within the Airfield, and parking.

APPROACH

We supported the project team in developing a site layout which met the clients access requirements and to support the scale and design of the facility proposed. We subsequently prepared a Transport Statement as part of the suite of documents that was submitted to Epping Forest District Council to support the planning application.

OUTCOME

The Transport Statement concluded that the development proposals would comply with transport planning policy and would not result in a severe impact on the existing highway network. The Highway Authority agreed with our conclusion in their consultation response which stated that they had "no objections to this proposal as it is not contrary to the Highway Authority's Development Management Policies". The planning application was subsequently granted planning permission.

RELATED PROJECTS

Potters Resort, Hopton-on-Sea

