

# DRIVE THRU, HOLYHEAD ROAD, WEST BROMWICH

## OVERVIEW

**CLIENT**  
Tim Hortons

**SECTORS**  
Retail

**LOCATION**  
West Bromwich

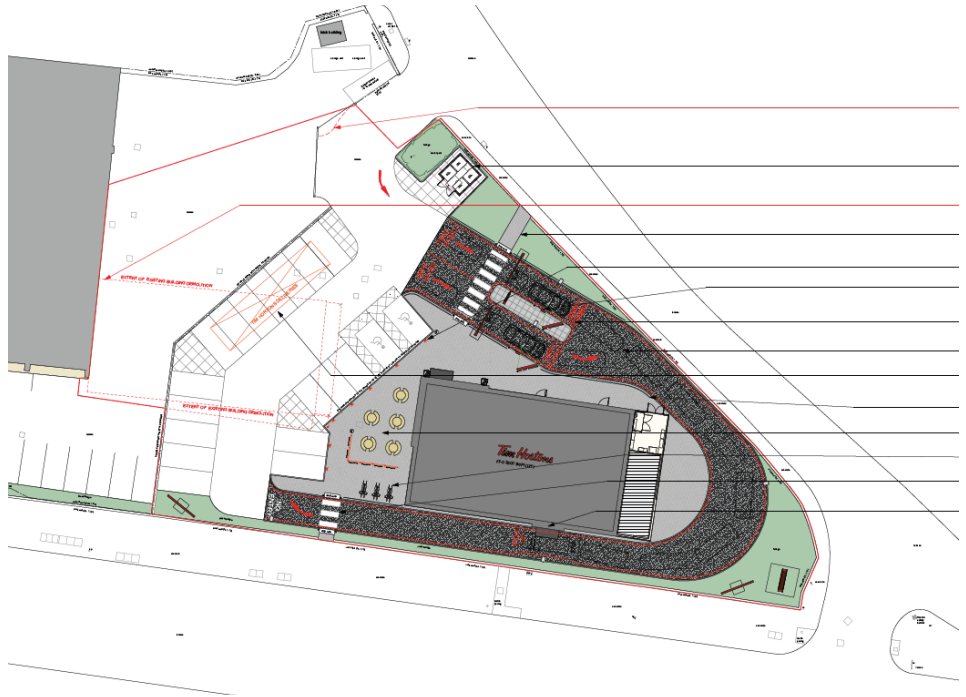
**PLANNING AUTHORITY**  
Sandwell Council

**HIGHWAY AUTHORITY**  
Sandwell Council

**PROJECT TEAM**  
Williams Gallagher

**PROJECT MANAGER**  
Andrew Snowden

**PROJECT DIRECTOR**  
Daniel Ekstrand



## PROJECT

We were instructed by Tim Hortons to support an application for the development of a Tim Hortons Drive Thru restaurant on land currently used as car parking for an adjacent warehouse.

## APPROACH

We prepared a short Transport Statement to examine the key transport related issues, including trip attraction taking account of the significant potential for linked and pass-by trips. We undertook various additional work following discussions with the highway authority, including capacity assessments of the nearby junction with Holyhead Road.

Whilst we were able to demonstrate that the development would not have a material impact on the safety or operation of the highway during normal operation, the highway authority had specific concerns over the operation of the site during match days and other events at the nearby stadium of West Bromwich Albion. We therefore prepared a Servicing and Management Plan including Match Day Management Arrangements, which set out measures to manage the access to and use of the site during these times.

## OUTCOME

The planning application was granted permission subject to conditions.

## RELATED PROJECTS

Drive Thru, Anglia Retail Park, Ipswich

